

**Construction**

- Units are all welded, Constructed of Heavy-Duty extruded 6063 aluminum alloy
- Universal adjustable angle allows the user to change angle spacing as needed to accommodate different trays and product configurations
- Sides allows for 1.5", 3", 4.5" or 6" spacing

**Angles**

- Adjustable angles can be moved and configured as needed
- Angles are aluminum and adjustable on 1-1/2" centers
- 5.25" wide stepped angles allow for:
  - 10" x 20" Roast and Bake Pans
  - 20" x 22" Roast & Bake Pans
  - 18" x 26" Roasting Pans
  - 18" x 26" Bun Pans
  - 18" x 13" Pans
  - 12" x 20" Steam Table Pans
  - 20 3/4" x 25 1/2" European Standard Gastro-Norm Pans
  - 15" x 20" Service Tray
  - 14" x 18" Service Tray
  - 20" x 20" Cup & Glass Racks
- Additional runners can be ordered to increase tray capacity

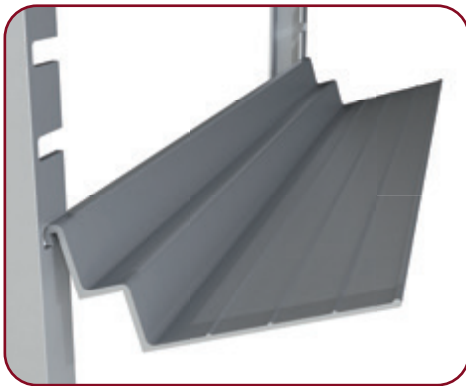
**Frame**

- Uprights are 2.5" x 1" channel
- Door, and base are 1/8" solid aluminum
- Top and rear panel are constructed from .090" solid aluminum
- Cross brace is 1" square aluminum tubing
- Side ledge 1-3/8" x 1/8" wall channels are all welded with slots

**Casters**

- 5" Poly-U Casters on all units for easy maneuverability

**NEW!**  
**Universal Adjustable Angle**  
 allows changing angle spacing as needed to accommodate different trays and product configurations



Easily remove and re-position angles



CCUA-2212-64-CD  
 Clear Door

Model Number	Overall Dimensions			Tray Cap	Runner Spacing	Ship Lbs.	List Price \$
	W	D	H				
CCUA-2213-70	28"	28"	70"	13	ADJ	150	4436
CCUA-2212-64	28"	28"	64"	12	ADJ	145	4251
CCUA-2211-60	28"	28"	60"	11	ADJ	140	4189
CCUA-226-36	28"	28"	36"	6	ADJ	85	3770
CCUA-225-29	28"	28"	29"	5	ADJ	80	3573

**CCUA Universal Adjustable Enclosed Cabinet Options:**

-CD, -HD, -620U, -BK, -B, -COR, -CB, -ODL (see page 18 for option descriptions)

